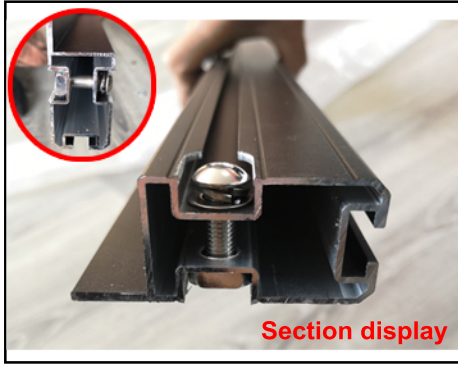


PLATFORM ROOF BASKET SPECIAL FOR JEEP WRANGLER JK INSTALLATION INSTRUCTIONS



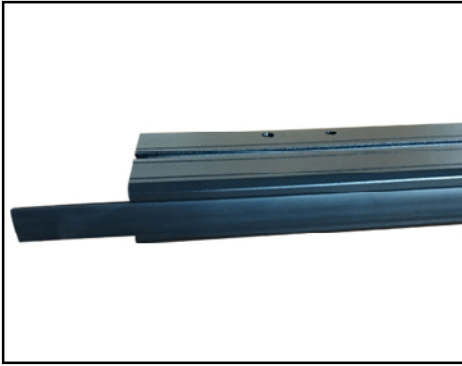
1. Install corners and connect the corners to the frame.



2. Pass the screw through the hole of the side beam, use a wrench to penetrate it to another hole, and hold it with a square nut, and finally use a wrench to tighten the screw.



3. Assemble the other three corners in turn.



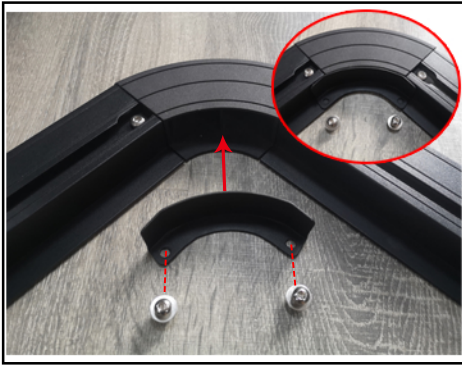
4. Slide one long rubber into front groove of the foremost platform tube.



5. Install the bottom plate, match the bottom plate to the hole of the frame, and fix it with screws.



6. The installation is complete.



7. As shown in the picture, to install the corner reinforcement accessories, you need to perforate and install



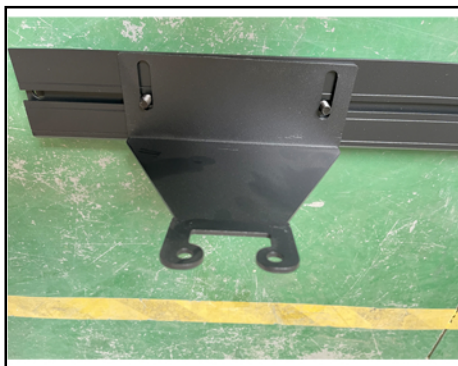
8. Put to slider.



9. Match the bracket hole position to the slider, and then tighten with screws.



10. Put the frame of the assembled bracket on the roof of the vehicle, adjust the bracket to the proper position on the roof, and fix it with screws.



11. As shown in the figure, install the rear bracket, the bracket corresponds to the screw hole position, lock and fix.



12. Unfasten the plastic cover at the rear of the car, unscrew the screws, and place the brackets corresponding to the screw holes, then tighten the screws, and finally close the cover.



13. The luggage frame is installed.

