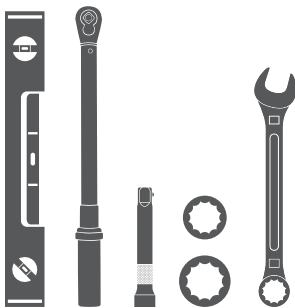


Parts List

1	Driver / left side bar
1	Passenger / right side bar
2	Mounting bracket, front
2	Brace bracket, front
2	Mounting bracket, rear
6	Bolt plate, 10mm
10	Hex bolt, 10mm
18	Flat washer, 10mm
16	Lock washer, 10mm
8	Hex nut, 10mm
2	Bolt plate, 12mm
2	Flat washer, 12mm
2	Lock washer, 12mm
2	Hex nut, 12mm
6	Plastic bolt retainer, 9mm
2	Plastic bolt retainer, 12mm

Tools Required

Torque wrench	Extension
Level	Socket, 16mm
Wrench, 16mm	Socket, 18mm



Level of Difficulty

Easy



Scan for helpful install tips

Product Image



Notes and Maintenance

Before you begin installation, read all instructions thoroughly.

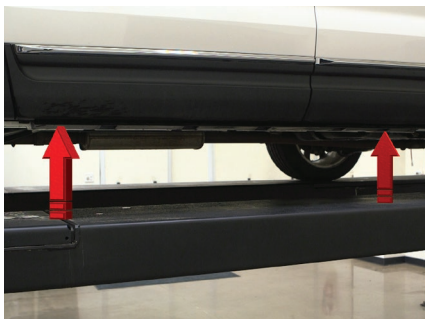
Proper tools will improve the quality of installation and reduce the time required.

To protect the product, wax after installing. Regular waxing is recommended to add a protective layer over the finish. Do not use any type of polish or wax that may contain abrasives that could damage the finish.

For stainless steel and aluminum, polish may be used to clear small scratches and scuffs on the finish. Mild soap may be used also to clean the product.

Step 1

Starting on the driver side, locate the two mounting locations underneath the vehicle.

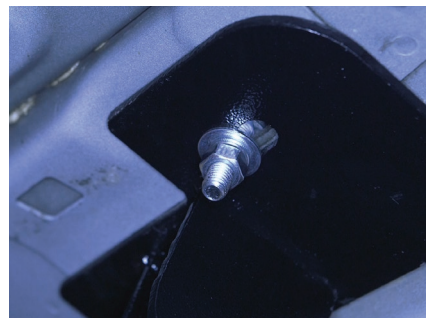


Step 2

Locate the driver-side front mounting tab. Insert a 10mm bolt plate into the round slot. Slide a 9mm plastic bolt retainer over the thread of the bolt to hold the bolt in place.

Place the front mounting bracket onto the vehicle and secure with a 10mm flat washer, 10mm lock washer and 10mm hex nut.

Snug the hardware, but do not fully tighten.

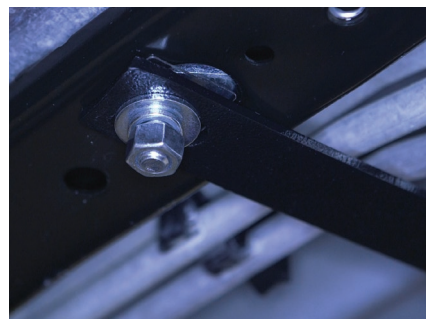


Step 3

Insert a 12mm bolt plate into the frame of the vehicle. Slide a 12mm plastic bolt retainer over the thread of the bolt to hold the bolt in place.

Place the front brace bracket onto the vehicle and secure with a 12mm flat washer, 12mm lock washer and 12mm hex nut.

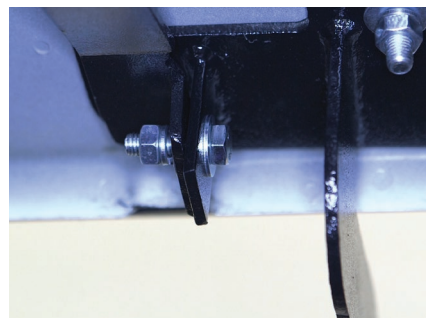
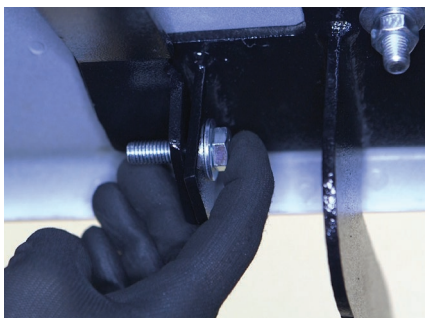
Snug the hardware, but do not fully tighten.



Step 4

Secure the front mounting bracket to the brace bracket by inserting a 10mm hex bolt and 10mm flat washer through the inside. Secure with a 10mm flat washer, 10mm lock washer and 10mm hex nut on the outside.

Snug the hardware, but do not fully tighten.

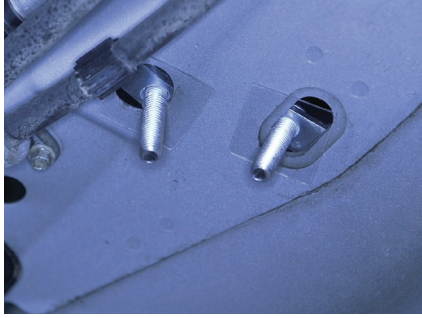


Step 5

Locate the driver-side rear mounting tab. Insert a 10mm bolt plate into each of the openings. Slide two 9mm plastic bolt retainers over the threads of the bolts to hold the bolts in place.

Place the rear mounting bracket onto the vehicle and secure with two 10mm flat washers, two 10mm lock washers and two 10mm hex nuts.

Snug the hardware, but do not fully tighten.



Step 6

Place the side bar onto the mounting brackets and align the mounting points.

Secure the side bar to the brackets using a 10mm hex bolt, lock washer and flat washer at each mounting location.

Snug the hardware, but do not fully tighten.



Step 7

Adjust and level the side bar.

With the side bar in position, it is recommended to tighten all brackets to the vehicle first, followed by the side bar connections.



Step 8

Repeat steps 1 through 7 on the passenger side of the vehicle.

Congratulations on the installation of your new ARIES 3" round side bars.

With the side bars installed, periodic inspections should be performed to ensure all mounting hardware remains tight.

To protect your investment, see the 'Notes and Maintenance' section on the first page of this instruction manual.

