



WWW.SMITTYBILT.COM

## Installation Instructions

Carbine Front Bumper  
Part# 76744  
07-16 JK 2 and 4 Door

NOTE: Carefully review and understand instructions before installing this part.

Parts Included	Qty
93-314TU002 Bumper	1
93-314TU003 Light Mount	1
90-314TU004 Fairlead Mount	1
90-314TU005 Inner Support Plate	1
90-6920 Fog Light Hdw Pack	1
Nylon Insert	8
#8 Phillips Screw	8
#8 Flat Washer	8
90-6379 License Plate Hdw Pack	1
6x45mm Bolt	2
6mm Flat Washer	4
6mm Lock Nut	2
90-314TU006 License Plate Spacer	2

Parts Included	Qty
90-6932 Frame Hdw Pack	1
12mm Lock Nut	8
12mm Flat Washer	8
90-6823 Cross Member Hdw Pack	1
10mm x 25mm Hex Bolt	4
10mm Flat Washer	8
10mm Lock Nut	4
90-6089 Light Bar & Fairlead Hdw	1
10mm x 35mm Hex Bolt (Fairlead)	4
10mm Flat Washer	16
10mm Lock Nut	6
10mm x 25mm Hex Bolt (Light Bar)	6

### INSTALLATION:

**Step 1:** Unbolt and remove the factory front bumper and hardware from the vehicle. On certain models it may be necessary to remove the OE front plastic frame cover.

*NOTE: Be sure to unclip the factory fog light wiring harnesses if equipped*

**Step 2:** Remove the OE fog lights, OE plastic retaining clip, and OE hardware.

**Step 3:** Drill out the (2 per side), outer holes in the frame bumper mounting plates to 1/2". (Fig. A, B)

For Technical Support/Warranty Information please call 310-762-9944

Smittybilt, 400 West Artesia Blvd, Compton, CA 90220



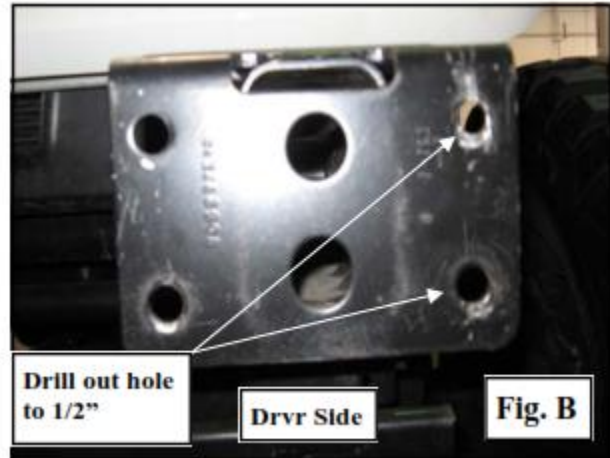
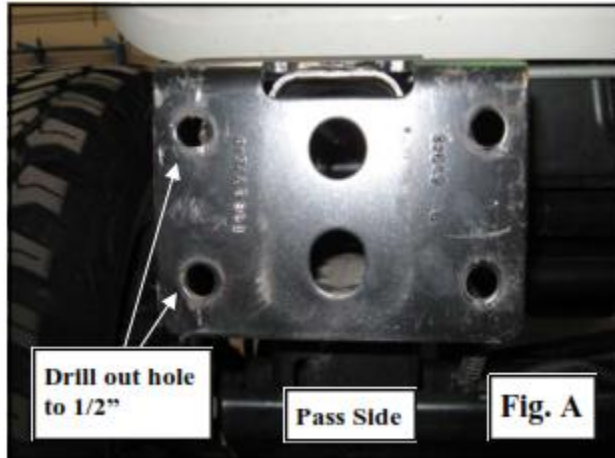
WWW.SMITTYBILT.COM

## Installation Instructions

Carbine Front Bumper

Part# 76744

07-16 JK 2 and 4 Door



Step 4: Install the OE fog lights onto the bumper by first inserting the plastic retaining clips into the square cut outs on the bracket then securing the light with the included Phillip screws. (Fig C)



Step 5: Install the Light/bull Bar using the included 10mm hardware. The front 2 holes mount to threaded inserts so only a 10 x 25mm bolt and flat washer is needed. The rear hole requires a 10 x 25mm bolt, 2 flat washers and a 10mm lock nut. (Fig D)

**For Technical Support/Warranty Information please call 310-762-9944**

**Smittybilt, 400 West Artesia Blvd, Compton, CA 90220**



WWW.SMITTYBILT.COM

## ***Installation Instructions***

Carbine Front Bumper

Part# 76744

07-16 JK 2 and 4 Door

**Step 6:** Install the fairlead bracket and inner support bracket (Fig E, F) with the included 10 x 35mm bolt, washer, and locknut. The inner support bracket will line up with some of the top winch mount holes. Note: using the inner support bracket increases the thickness of the winch mount plate, some winches may require longer bolts when installed. (Do not fully tighten until winch is installed)



**Step 7:** Note: May require two people. Raise the bumper up into place and align the studs on the bumper with the holes on the frame. Secure using the included 12mm hardware. (Fig G) (In some circumstances the other holes may also need to be drilled out to 1/2" due to variances)

**Step 8:** Once bumper is secured, using the 4 holes along the lower cross frame as a guide using a 7/16" drill bit. Secure using the included 10 x 25mm hardware. (Fig H)

**Step 9:** Reconnect the fog light wiring harness to lights. Note: OE wiring may need to be extended

**Step 10:** If installing front license plate to fairlead mount, use included 6mm hardware. (The spacer between the back of license plate and front of mount/bumper)

**Step 11:** Installation is now complete. (Fig J)

**For Technical Support/Warranty Information please call 310-762-9944**

**Smittybilt, 400 West Artesia Blvd, Compton, CA 90220**



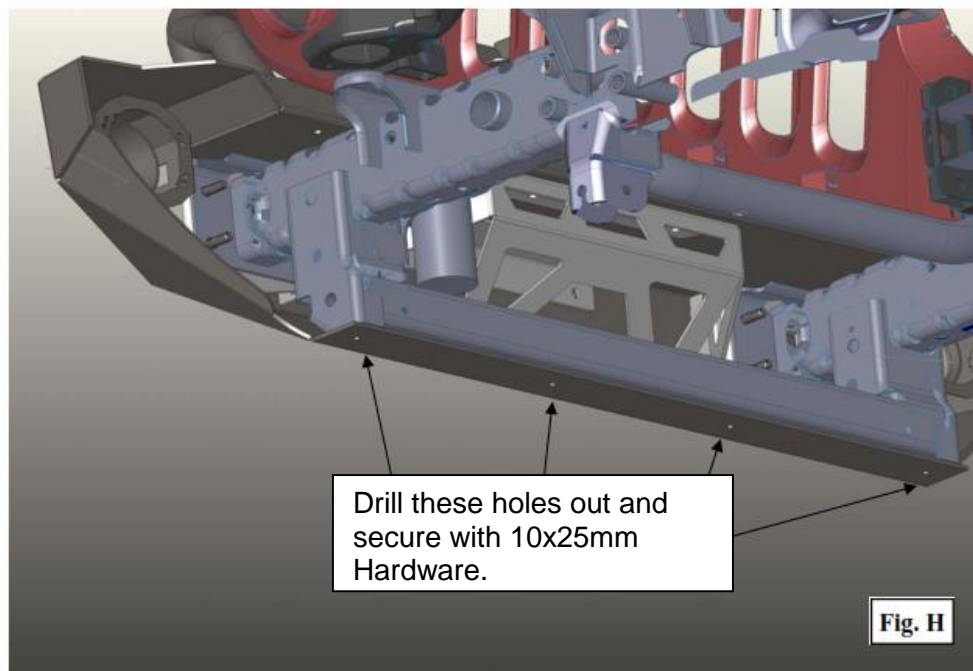
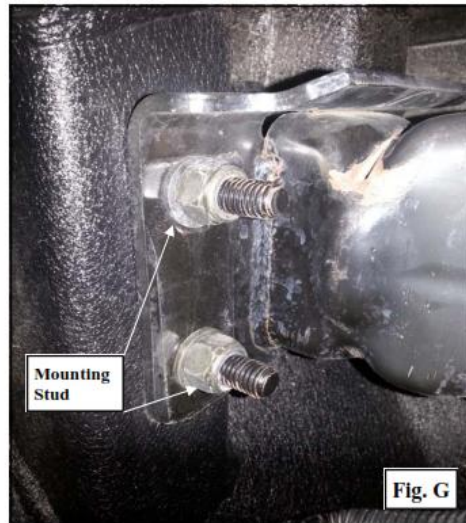
WWW.SMITYBILT.COM

## ***Installation Instructions***

Carbine Front Bumper

Part# 76744

07-16 JK 2 and 4 Door



For Technical Support/Warranty Information please call 310-762-9944

Smittybilt, 400 West Artesia Blvd, Compton, CA 90220



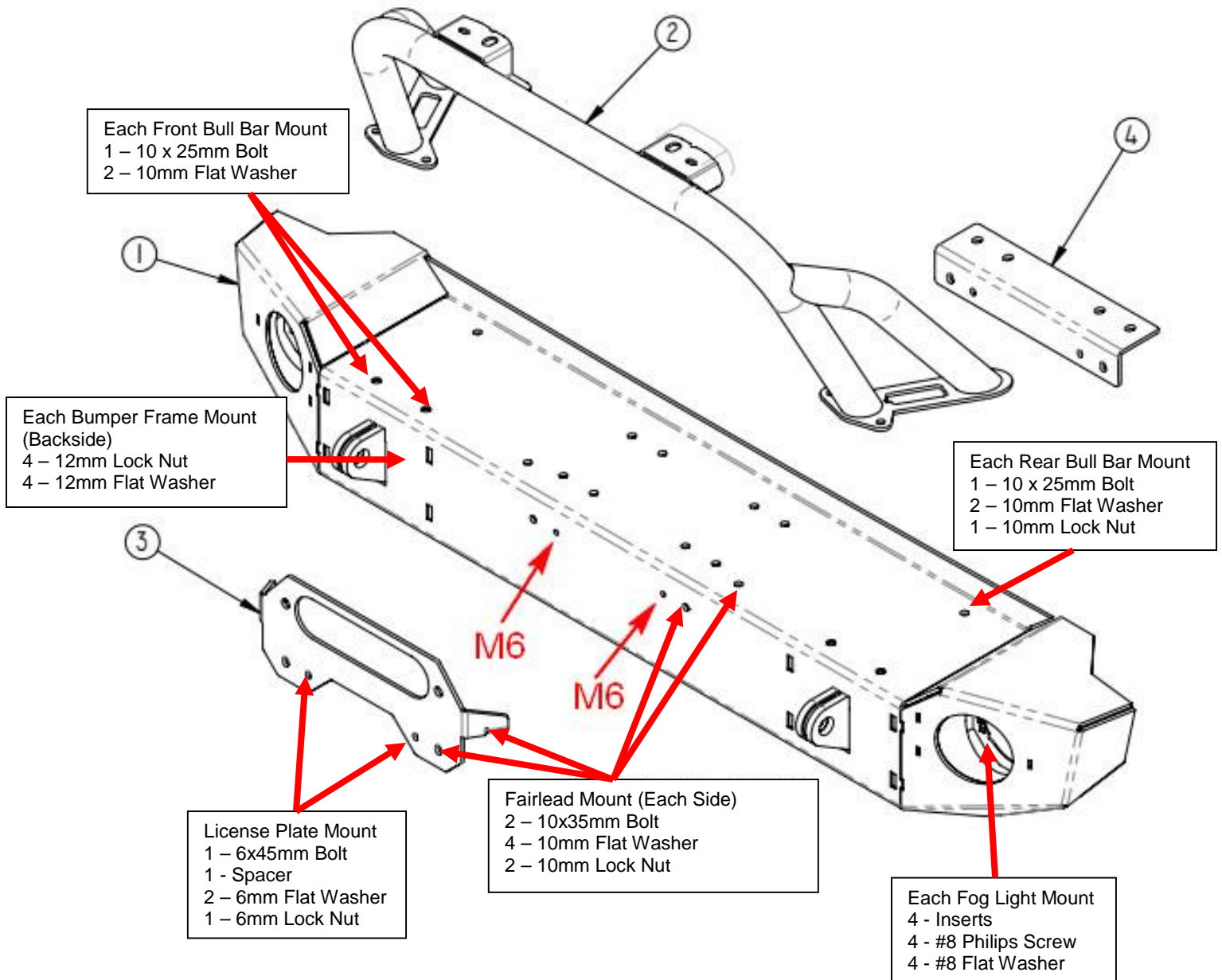
WWW.SMITTYBILT.COM

## Installation Instructions

Carbine Front Bumper

Part# 76744

07-16 JK 2 and 4 Door



For Technical Support/Warranty Information please call 310-762-9944

Smittybilt, 400 West Artesia Blvd, Compton, CA 90220



WWW.SMITTYBILT.COM

## Installation Instructions

Carbine Front Bumper

Part# 76744

07-16 JK 2 and 4 Door



Bolt Torque and ID						
Decimal System			Metric System			
All Torques in Ft. Lbs. Maximums						
Bolt Size	Grade 5	Grade 8	Bolt Size	Class 9.8	Class 10.9	Class 12.9
5/16	15	20	M6	5	9	12
3/8	30	45	M8	18	23	27
7/16	45	60	M10	32	45	50
1/2	65	90	M12	55	75	90
9/16	95	130	M14	85	120	145
5/8	135	175	M16	130	165	210
3/4	185	280	M18	170	240	290

<b>1/2-13x1.75 HHCS</b> Grade 5    Grade 8 (No. of Marks+2)	<b>M12-1.25x50 HHCS</b>
D T L X	D T L X
G = Grade (Bolt Strength) D = Nominal Diameter (Inches) T = Thread Count (Threads per Inch) L = Length (Inches) X = Description (Hex Head Cap Screw)	P = Property Class (Bolt Strength) D = Nominal Diameter (Millimeters) T = Thread Pitch (Thread Width, mm) L = Length (Millimeters) X = Description (Hex Head Cap Screw)

For Technical Support/Warranty Information please call 310-762-9944

Smittybilt, 400 West Artesia Blvd, Compton, CA 90220



WWW.SMITTYBILT.COM

## ***Installation Instructions***

Carbine Front Bumper

Part# 76744

07-16 JK 2 and 4 Door

---

### **Limited Warranties**

Smittybilt's products are covered under the following limited warranties only. Note that the duration of the limited warranty differs according to the material and finish of the product purchased. Subject to the duration and conditions of the limited warranty stated below, Smittybilt warrants to the original retail purchaser that its products are free from defects in material and workmanship. All other warranties and representations express or implied, are hereby disclaimed, including fitness for merchantability and buyer's intended use or purpose. All parts are sold "AS IS" except for the limited warranties granted herein. Buyer assumes all risks as to the selection, suitability and performance of all goods and products selected. This limited warranty does not cover damage or impairment in any part due to misuse, improper installation, accident or contact with on-road or off-road hazards, product modification, improper or inadequate cleaning and/or maintenance. Smittybilt is not responsible for items damaged during shipping. This warranty is not transferable from the original buyer. For the original Buyer to be eligible for the limited warranty coverage, the Buyer must provide proof of purchase. Smittybilt strongly recommends returning the warranty registration card.

Customer's remedy hereunder shall be limited only to repair or replacement (at Smittybilt's option) of any defective part(s) returned to Smittybilt at customer's expense. The determination of whether or not a returned part is defective or subject to coverage under the limited warranties stated herein shall be made at Smittybilt's sole discretion.

To assure product quality, Smittybilt reserves the right to change product design, material, specification and finishes without prior notice to customers. This limited warranty gives you specific legal rights and you may also have other rights, which may vary from state to state. Some states do not allow limitations on how long an implied warranty lasts, so the above limitations may not apply as to you. Also, some states do not allow the exclusion or limitation of incidental or consequential damages, so the above limitations or exclusions may not apply to you. Smittybilt reserves the right to discontinue product lines and substitute products, or provide other remedies than those listed in this limited warranty for those discontinued products.

### **Warning**

Rollover and other types of vehicle accidents may result in serious injury or death to you, your passengers and others sharing the road. Smittybilt accessories are decorative and are not intended to reduce or avoid injury or damage in the event of an accident. The weight and location of Smittybilt accessories may affect your vehicles' handling, stability and performance, creating an increased risk of accident or rollover. Before installing any accessory, check state laws and assure that the accessory will not obscure any lights or interfere with proper operation on your vehicle's safety equipment. Consult your owner's manual and the Smittybilt instructions, or additional safety information. Smittybilt products, nor the warnings contained herein, are not a substitute for your safe driving. Don't drink and drive, always use seat belts and don't drive faster than conditions permit.

**For Technical Support/Warranty Information please call 310-762-9944**

---

**Smittybilt, 400 West Artesia Blvd, Compton, CA 90220**