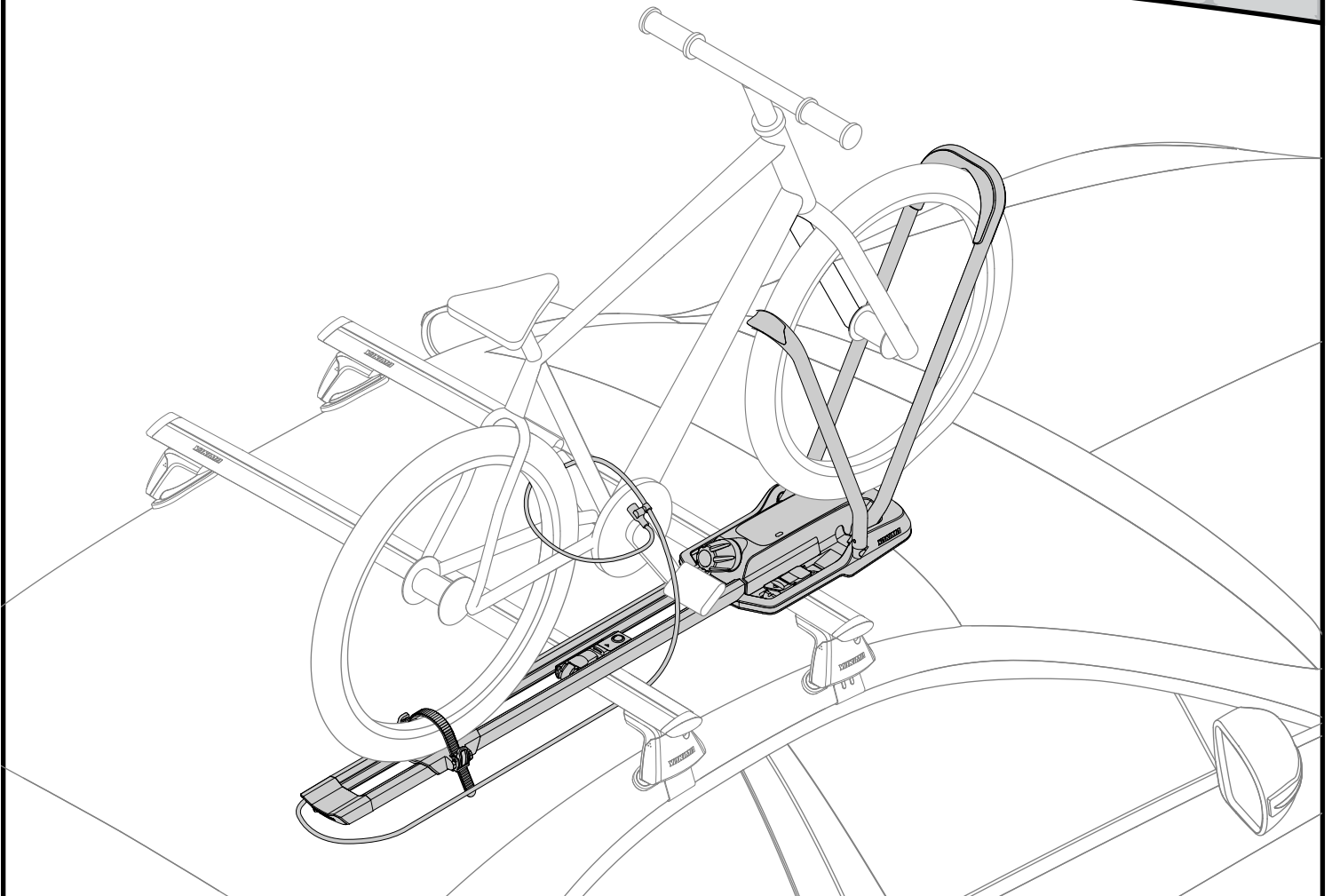
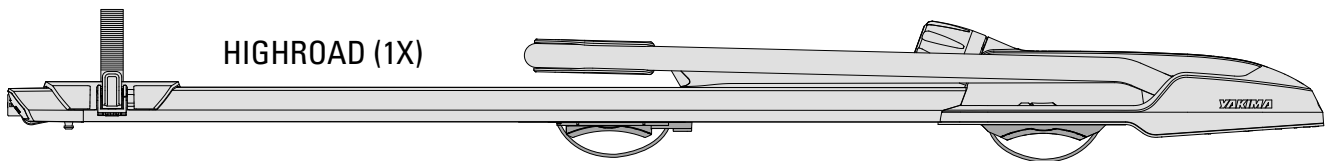


YAKIMA

HighRoad



CONTENTS



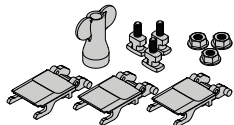
Max. Bike Weight

 = 45lbs / 20kg

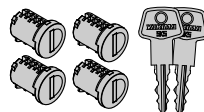
Crossbar Spread

18" (46 cm) min. - 35" (90 cm) max

Available Accessories



SmarT-Slot Kit 1
#8002122



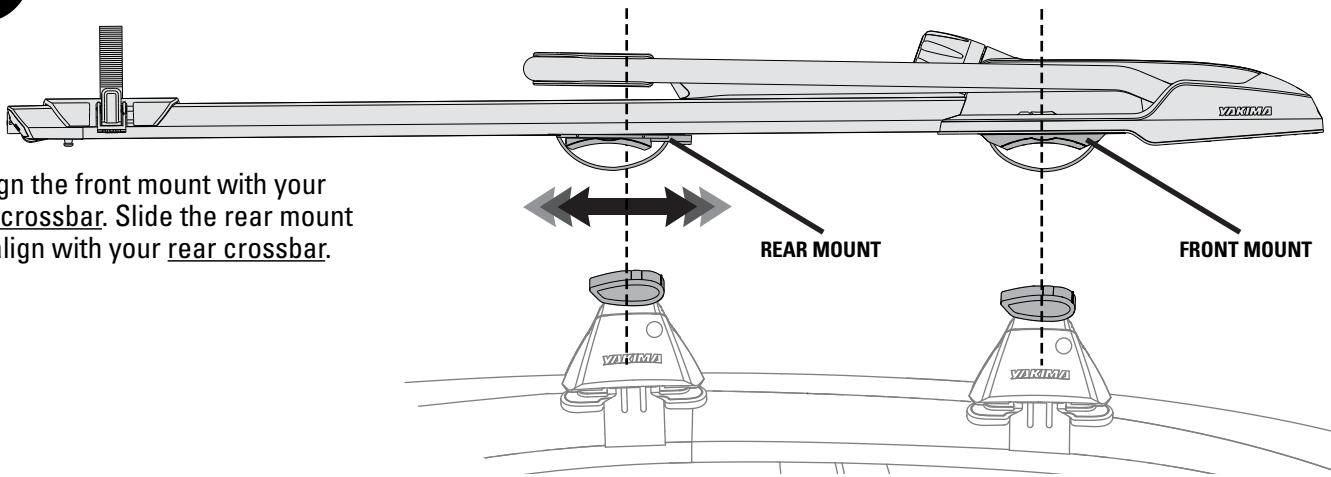
4-Pack SKS Locks
#8007204

INSTALLATION

1

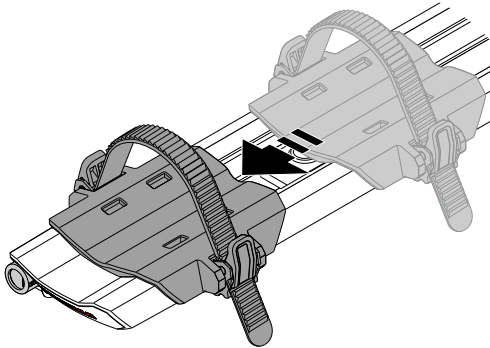
Place HighRoad on crossbars.

Align the front mount with your front crossbar. Slide the rear mount to align with your rear crossbar.



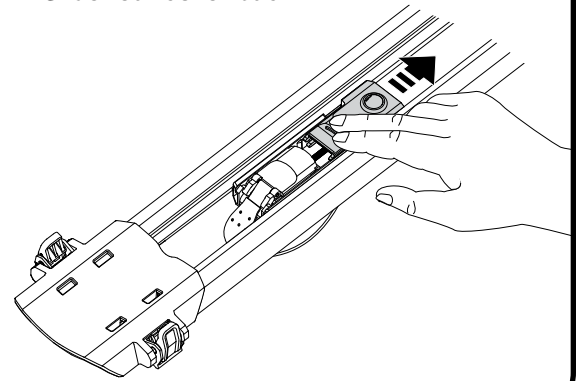
2

Slide wheeltray all the way back to gain access to top of rear mount.



3

Slide rear cover back.

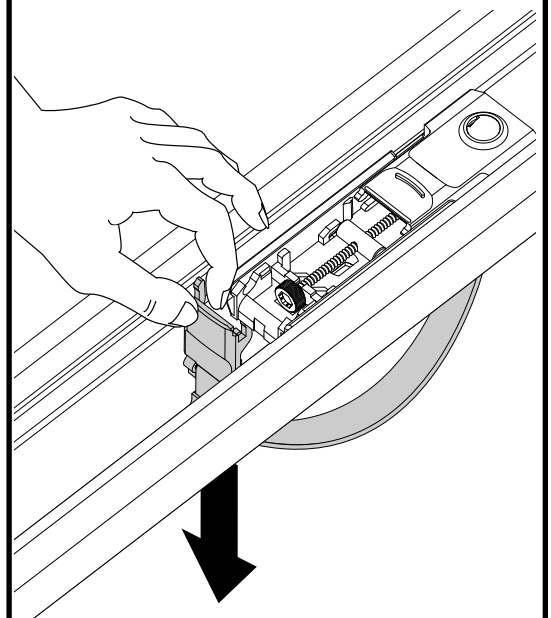
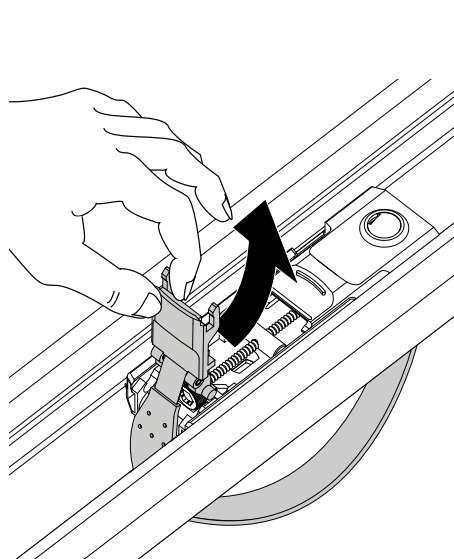
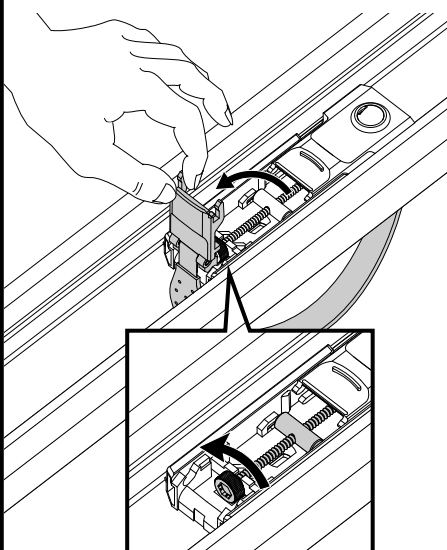


4

Open rear lever and loosen knob.

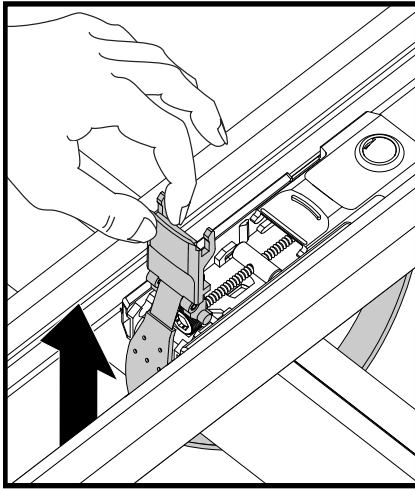
Lift lever up and back to clear detents.

Drop lever through frame.

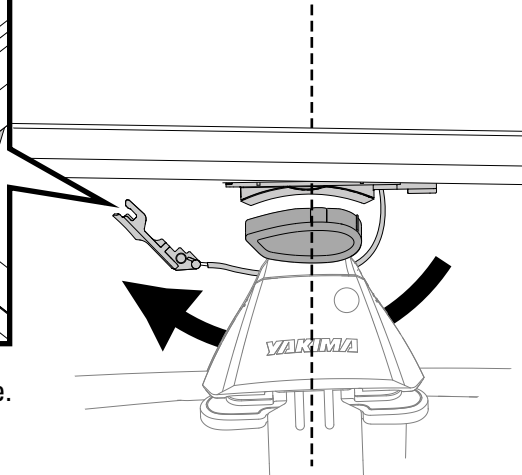
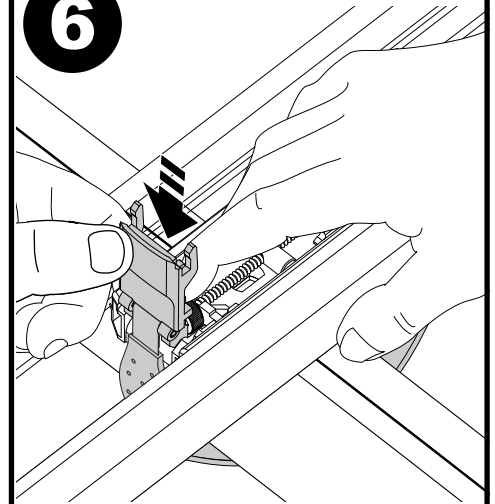


5

Lift HighRoad to route the rear strap under the rear crossbar.



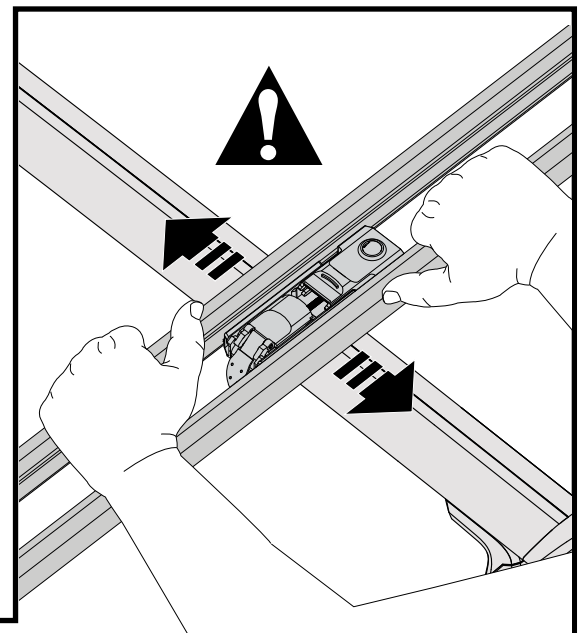
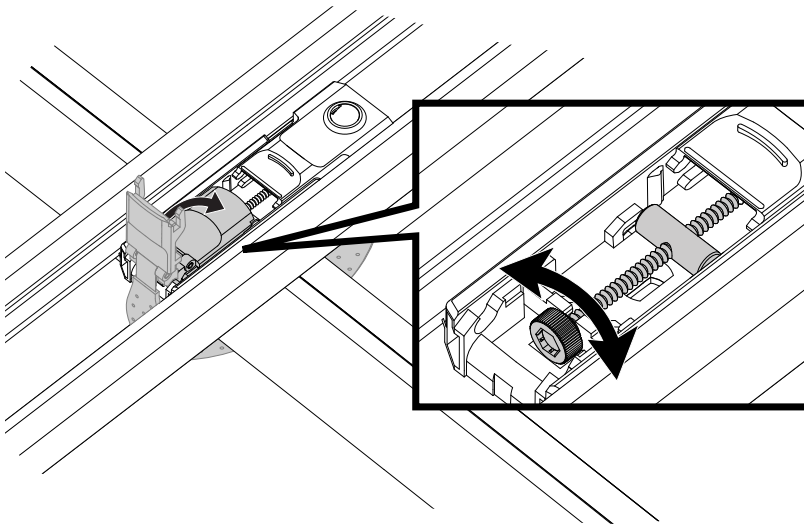
Pull the lever up through the frame.

**6**

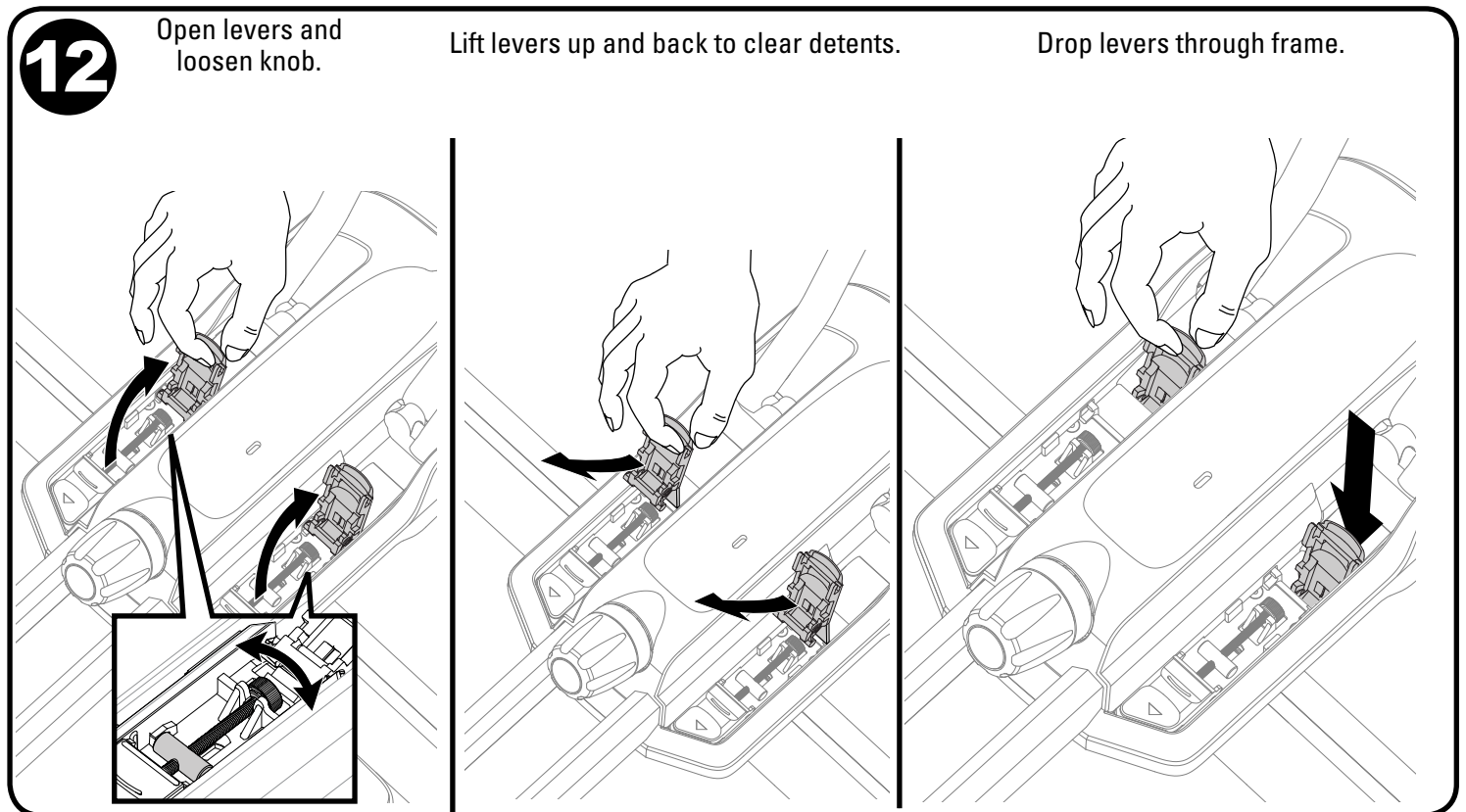
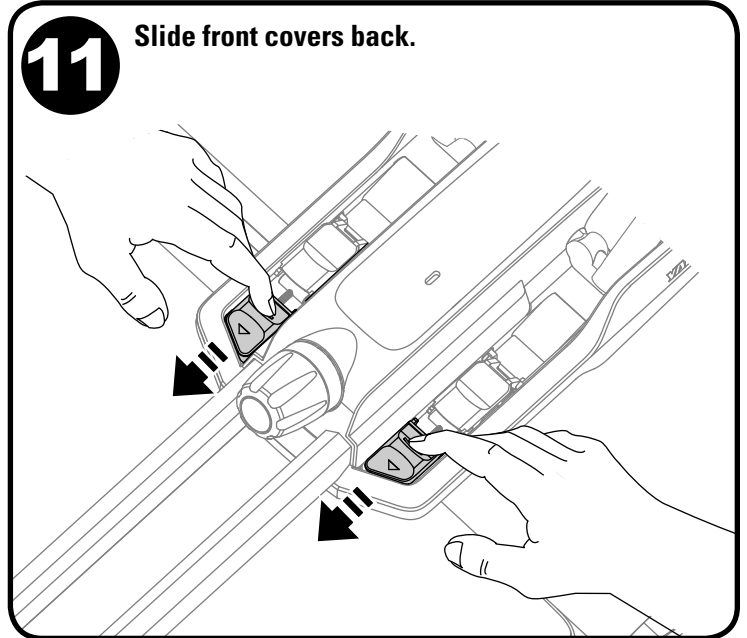
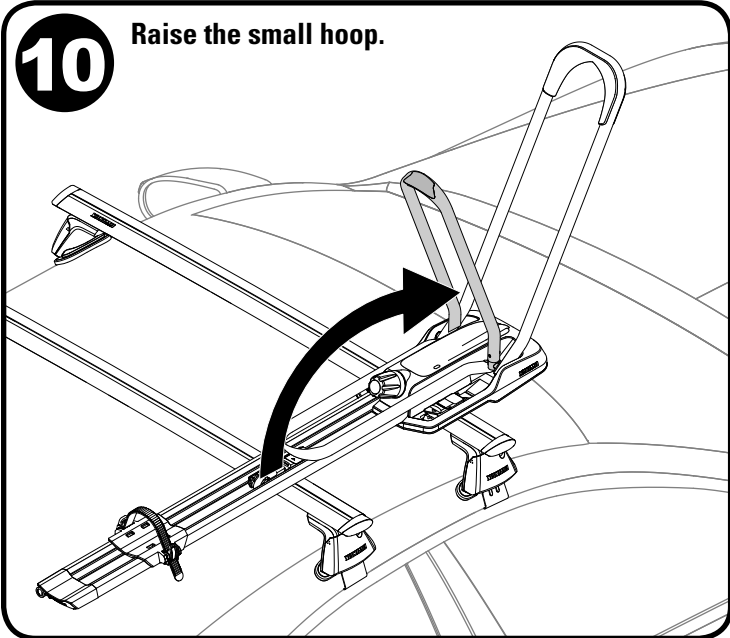
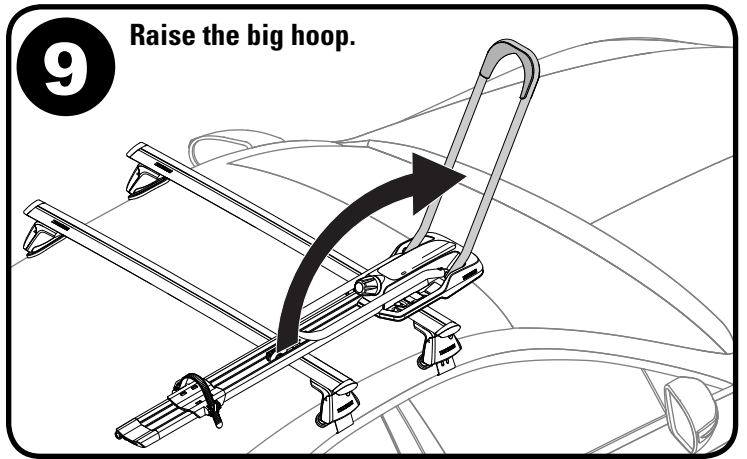
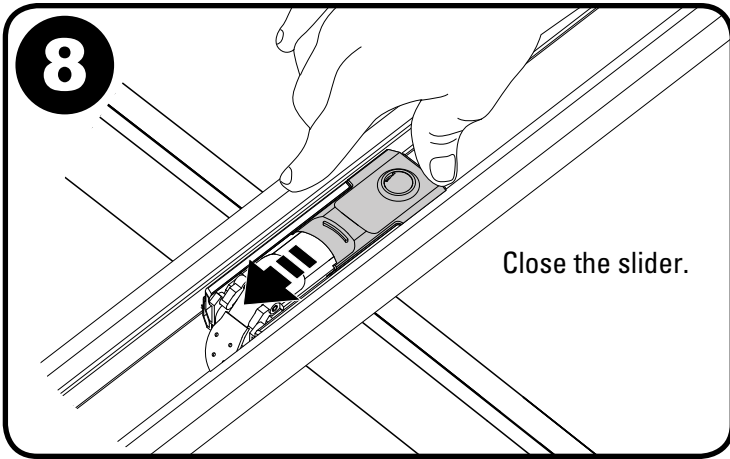
With the strap in place under the rear crossbar, hook the tabs back into the detents.

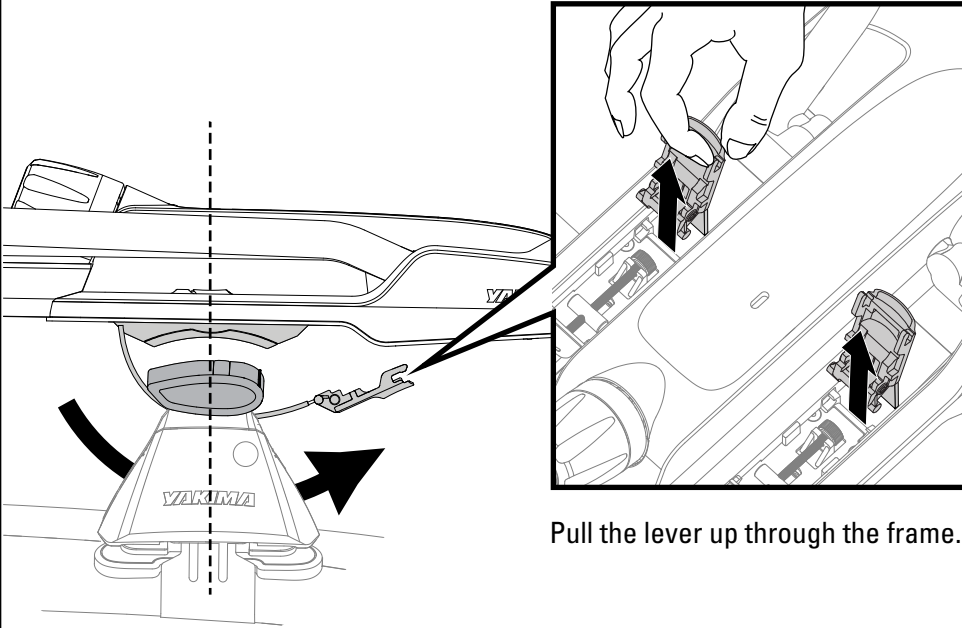
7**Close the lever and adjust strap tension.**

- Strap tension can be adjusted by turning the thumbwheel in both directions.
- Adjust the strap tension with the thumbwheel so the strap is tight around the crossbar when the lever is closed.

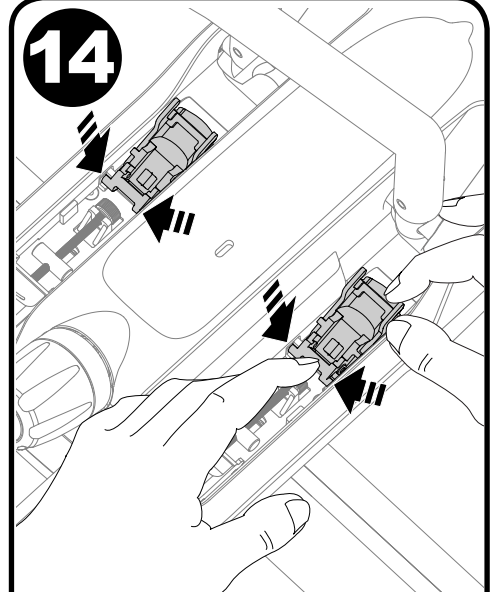


- The strap should be tight enough to prevent the HighRoad from sliding on the crossbar.
- If it slides on the crossbar, repeat step 7 to tighten strap tension.



13Lift HighRoad to route the front strap under the front crossbar.

Pull the lever up through the frame.

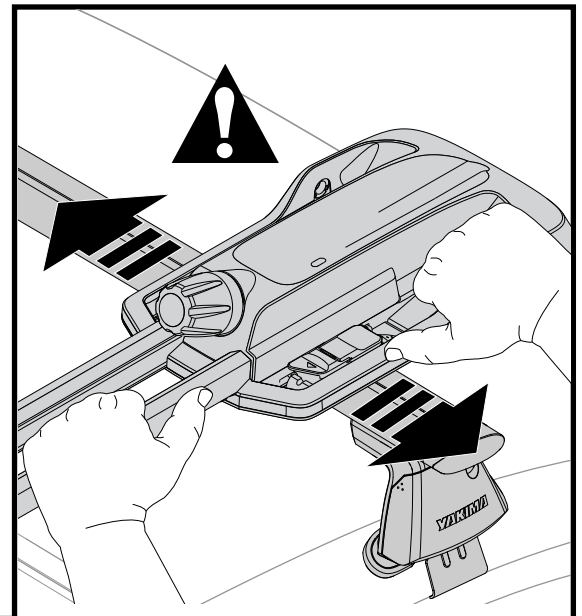
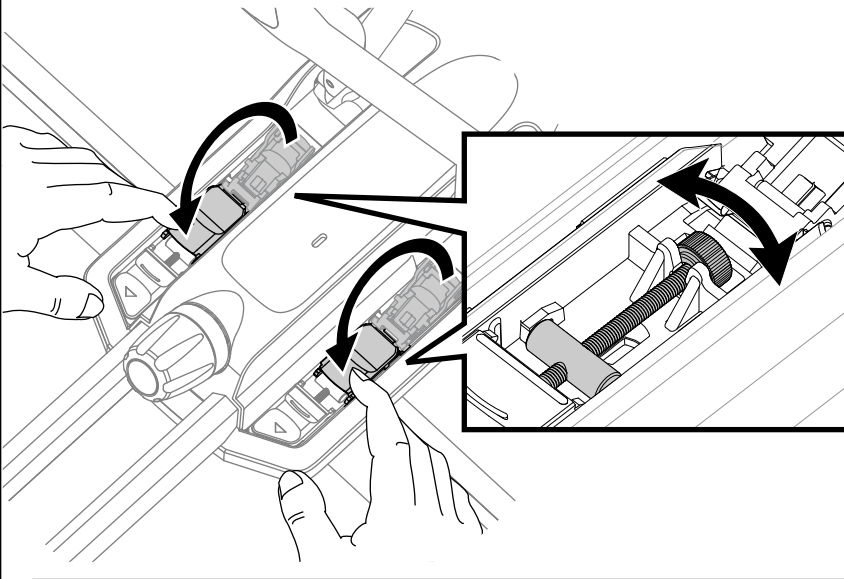
14

With the straps in place under the front crossbar, hook the tabs

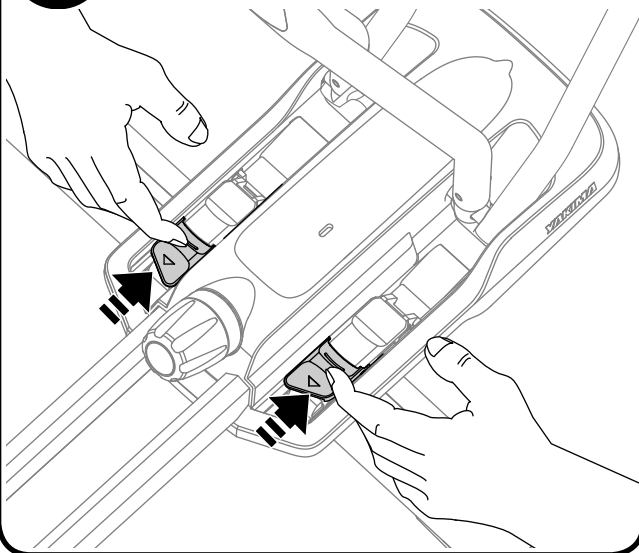
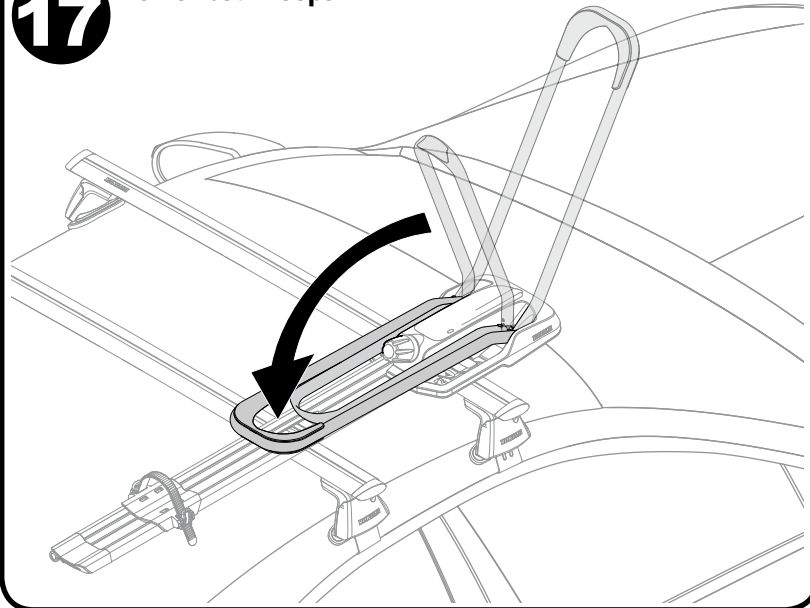
15

Close the front levers and adjust strap tension.

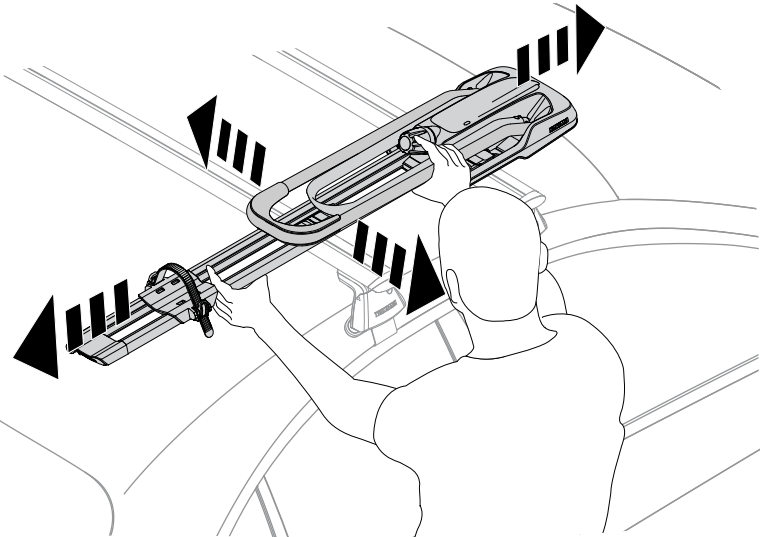
- Strap tension can be adjusted by turning the thumbwheel in both directions.
- Adjust the strap tension with the thumbwheel so the strap is tight around the crossbar when the lever is closed.



- The strap should be tight enough to prevent the HighRoad from sliding on the crossbar.
- If it slides on the crossbar, repeat step 15 to tighten strap tension.

16**Close the front covers.****17****Lower both hoops.****18****Test install.**

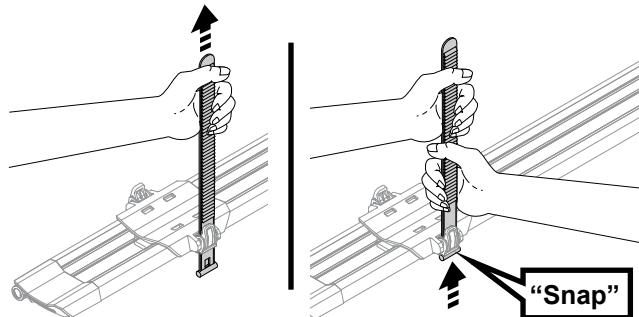
The HighRoad should not slide or move on crossbars. Tighten straps if necessary.



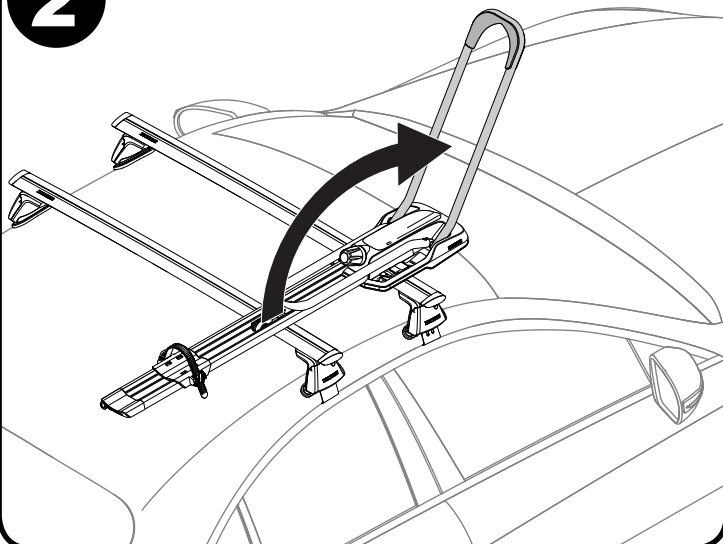
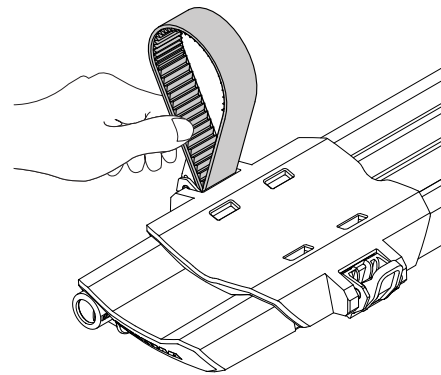
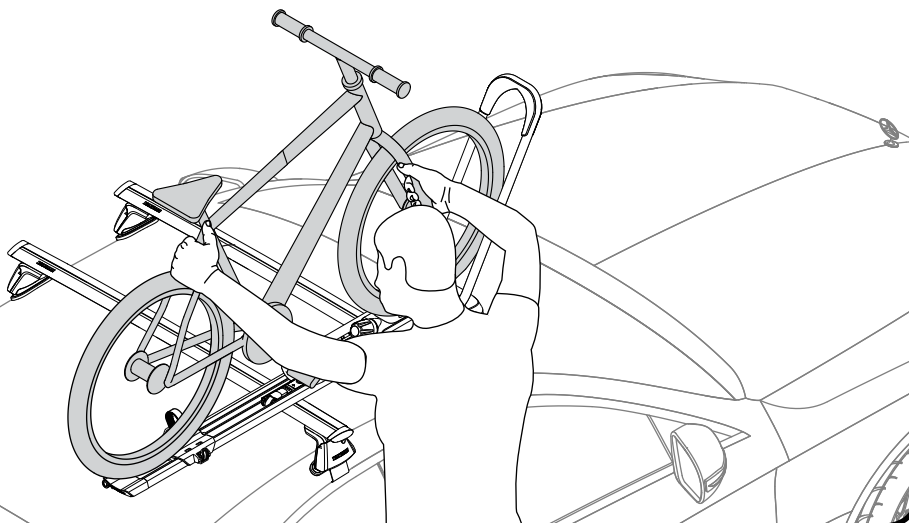
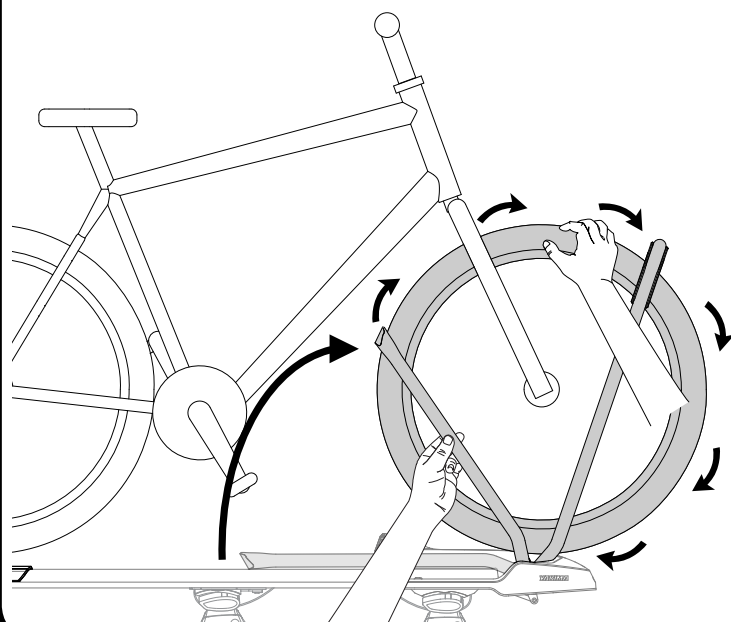
LOADING

1

Choose the appropriate wheelstrap for your bike. Use the longer strap for bikes with taller rims, or wider tires. Use the shorter wheelstrap for shorter rims, and thinner tires.

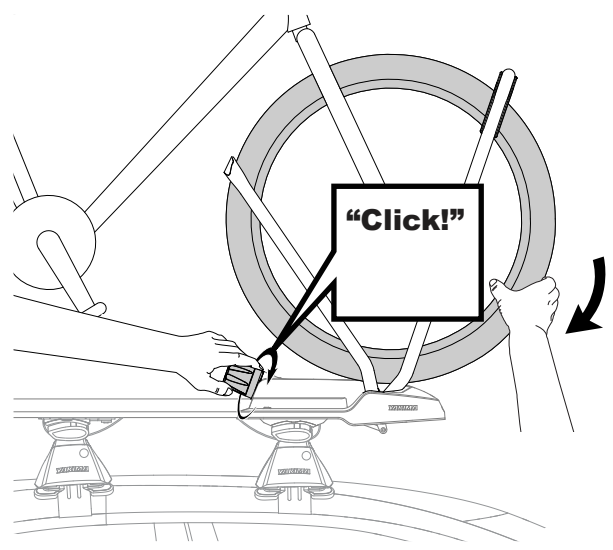


Note: You can install the wheelstrap on either side of the carrier. Consider which side of the vehicle you've mounted your carrier to and choose the appropriate side. **The teeth must face outward.**

2**Raise big hoop.****3****Tuck wheelstrap.**
Ranger la sangle de roue.
Pliegue la correa de rueda.Tuck wheelstrap
inside the buckle
to make way for
the rear tire.**4****Load bike.**Carefully place your bike
onto the HighRoad.**5****Roll into place and raise hoop.**To avoid contact with your frame, lift
the small hoop with one hand, and roll
the front wheel toward the big hoop.

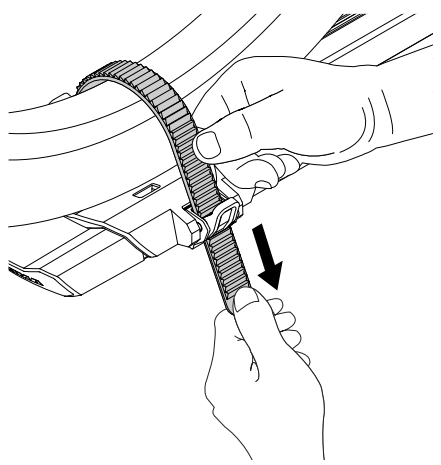
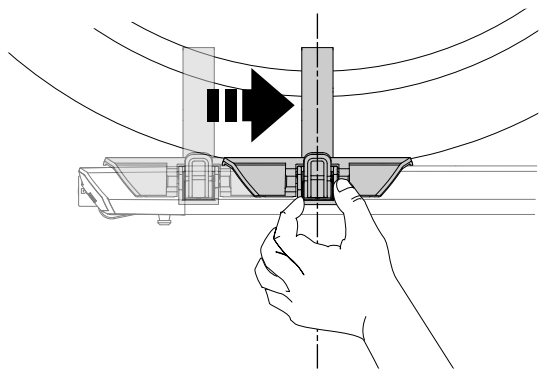
6 Tighten the knob.

Tighten the knob completely until you hear a clicking sound, as you roll the front wheel snugly against the big hoop.



7 Secure rear wheel.

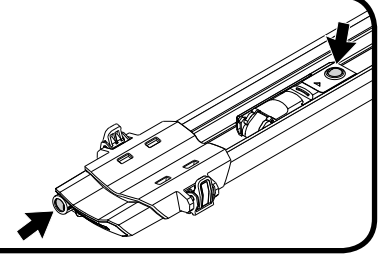
- Slide the rear wheel tray under the rear wheel.
- Adjust so strap clears spokes and valve stem.



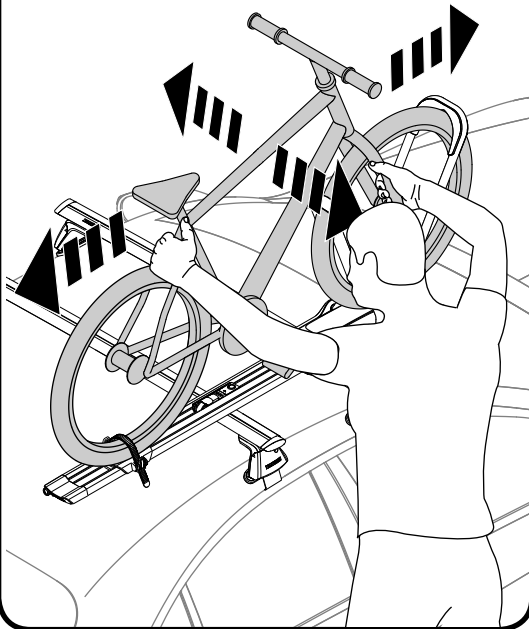
- Thread strap through spokes and insert it into the slot in the wheeltray.
- Pull hard to tighten.



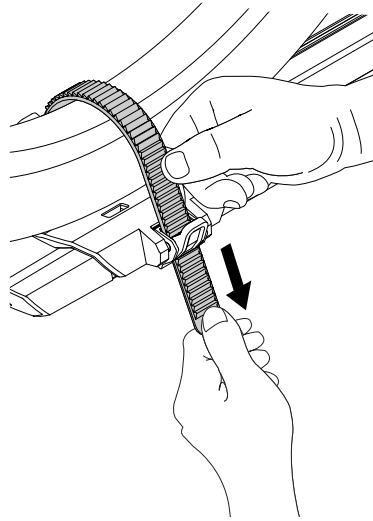
LOCK THE BIKE MOUNT.
If you have purchased lock cores, install them according to your lock core instructions.
Yakima #8007204



- TEST BIKE TO VERIFY IT'S SECURELY INSTALLED

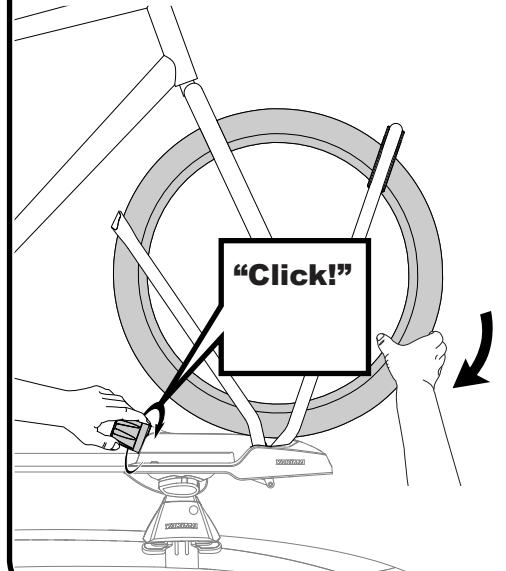


- CHECK REAR WHEEL.



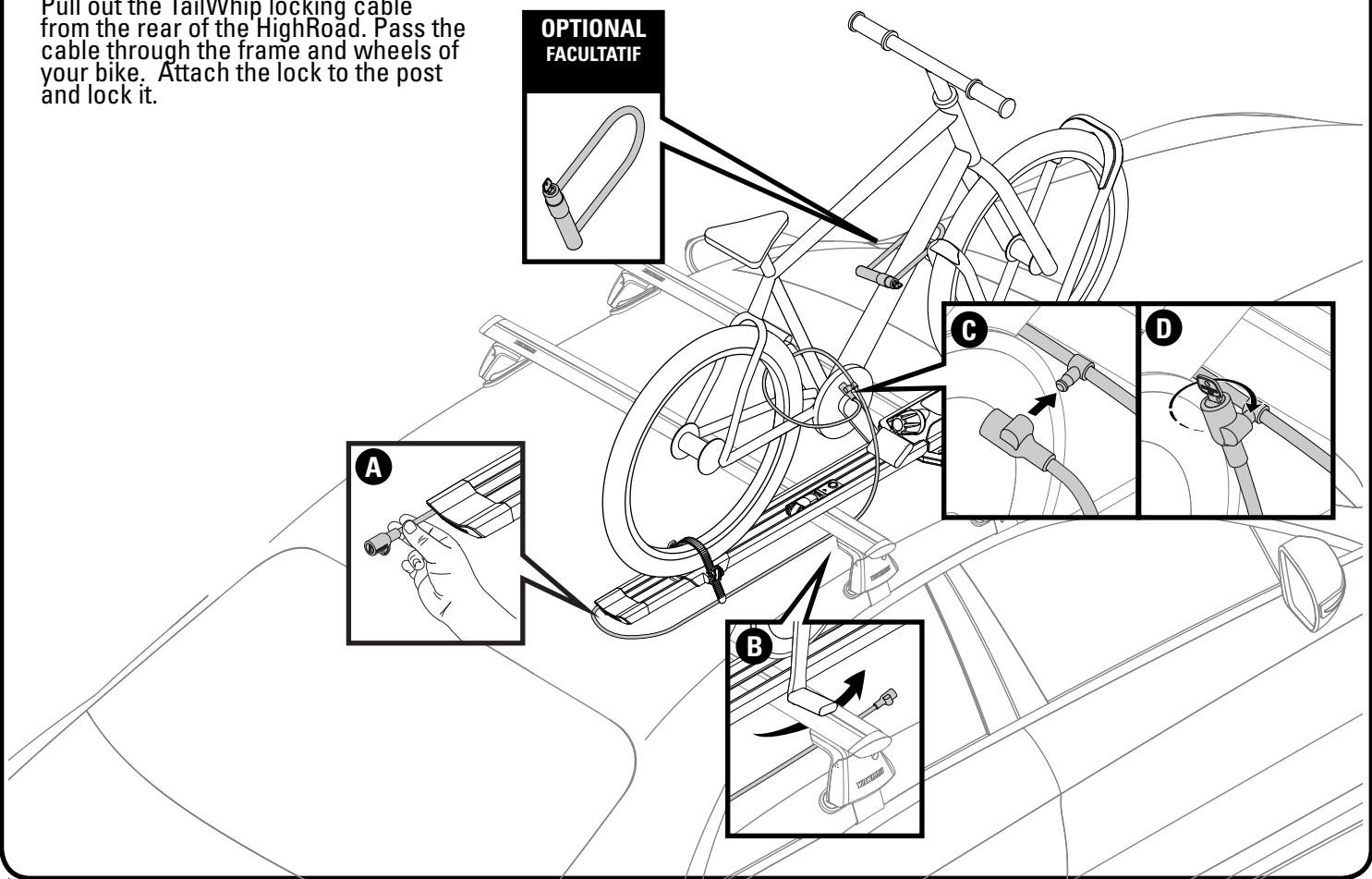
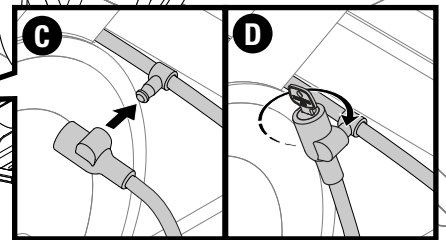
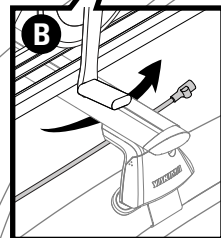
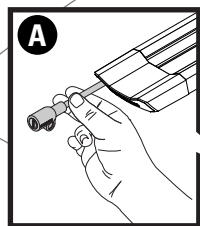
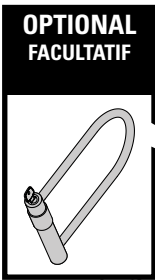
Tighten the strap if needed.

- PERIODICALLY CHECK THAT KNOB IS ADEQUATELY TIGHTENED.



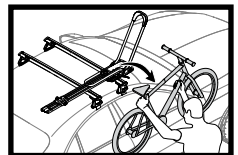
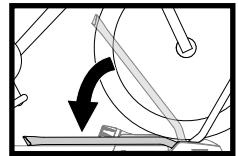
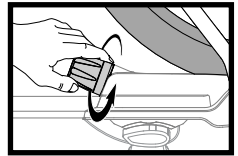
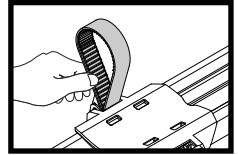
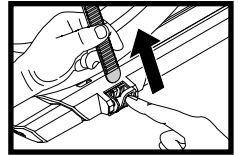
TAILWHIP LOCKING CABLE

Pull out the TailWhip locking cable from the rear of the HighRoad. Pass the cable through the frame and wheels of your bike. Attach the lock to the post and lock it.



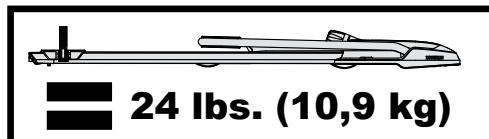
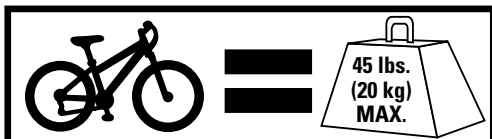
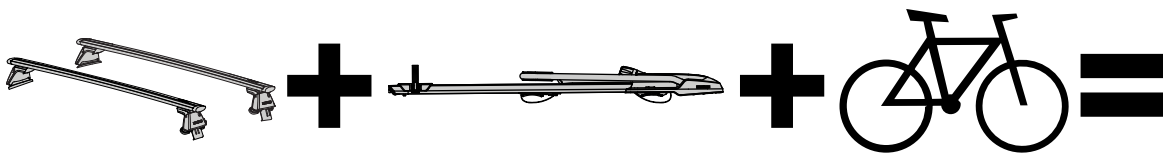
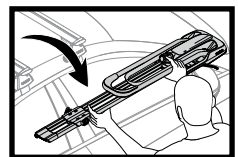
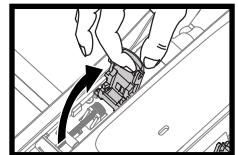
UNLOADING

1. Press the release button on the rear wheeltray to disengage the strap. Bring the strap through the spokes and tuck it into the slot.
2. While supporting the bike with one hand loosen the knob completely. Then lower the small hoop.
3. Roll the bike back and clear of the big hoop. Then carefully lift the bike off of the HighRoad, and lower the big hoop.

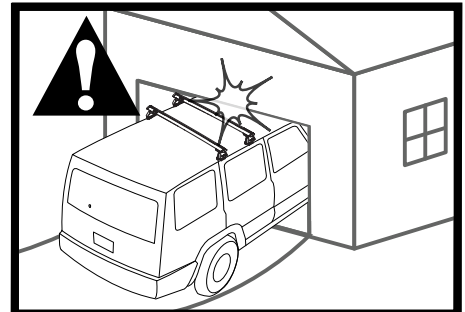
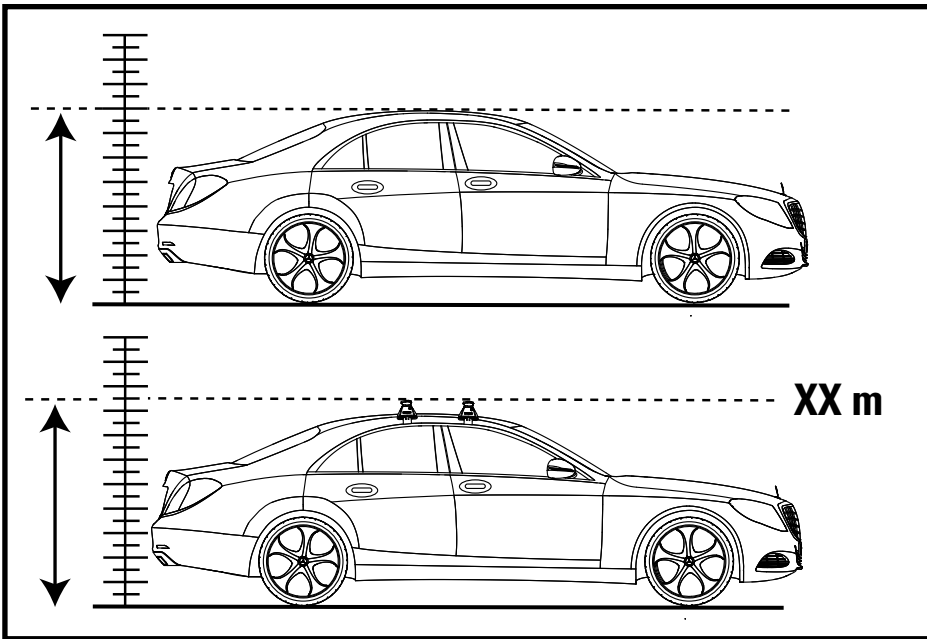


HIGHROAD REMOVAL

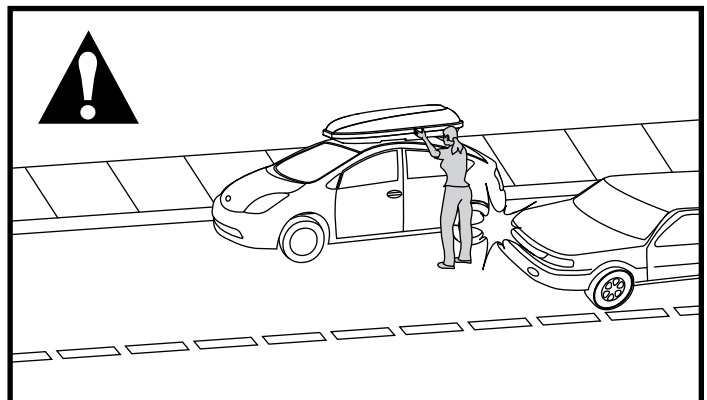
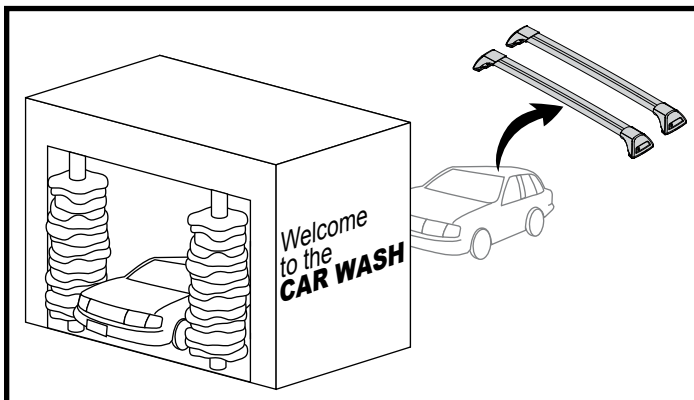
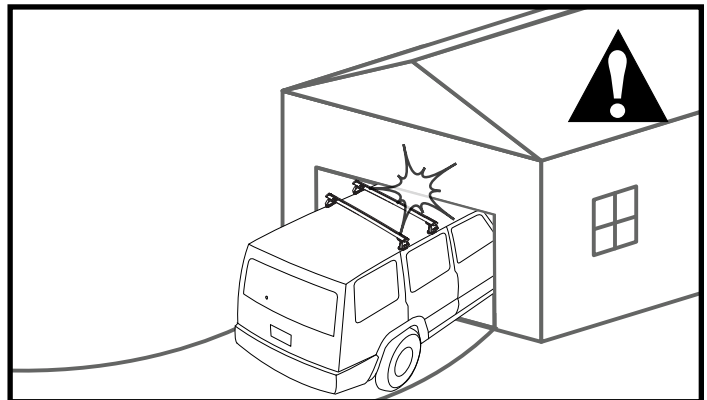
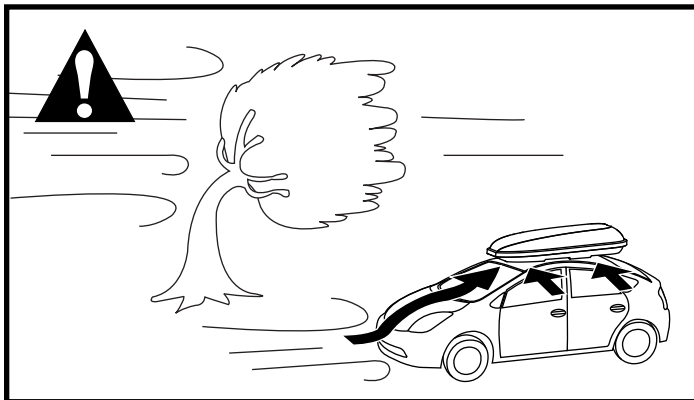
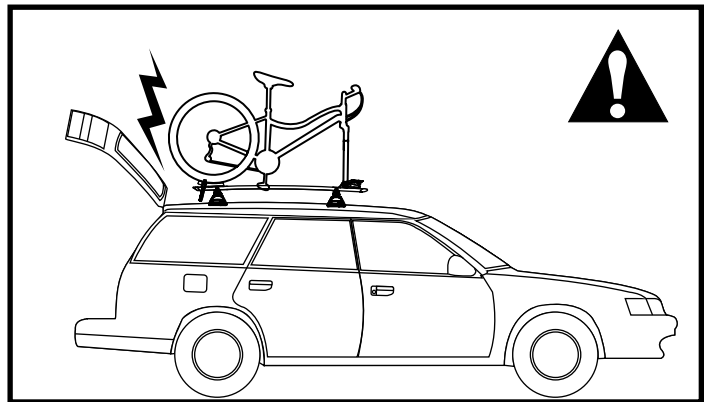
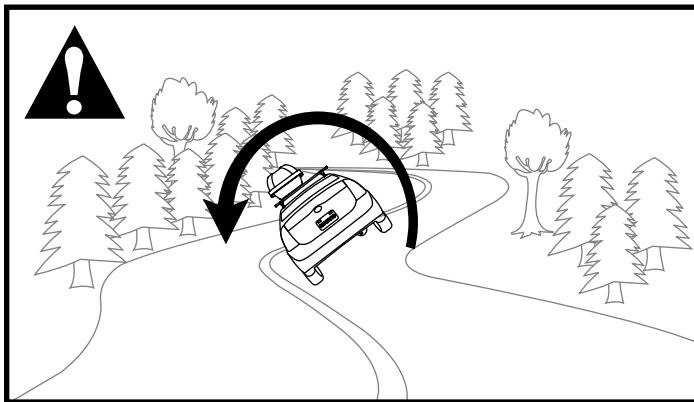
1. Open the front covers. Disengage the front levers, loosen the thumbwheel as necessary.
2. Open the rear cover. Disengage the rear lever, loosen the thumbwheel as necessary.
3. Lift the HighRoad off of the crossbars and store it in a safe place.



Not more than 165 lbs. (75 kg) unless otherwise noted.



Record Height Here.



EN IMPORTANT WARNINGS

Rack Installation

Inadequately secured loads and incorrectly mounted roof racks and accessory racks can come loose during travel and cause serious accidents! Therefore, installation, handling and use must be carried out in accordance with product and vehicle instructions.

In addition to these instructions, review the mounting instructions for the roof rack and the operating instructions of the vehicle.

These instructions should be kept together with the vehicle's operating instructions and carried in the vehicle when in use and en route.

For your own safety, you should only use tested (e.g. GS-tested) roof racks that are authorized for use with your vehicle.

For roof racks that do not specify the distance between the front and rear crossbars, the distance shall be at least 700mm or as large as possible. Please note that changes (e.g. additional drill holes) to the accessory rack's attachment system are not permissible.

Check attachment hardware and load for tight fit and function:

- Before the start of any journey.
- After driving a short distance (50km or 30 minutes) following rack or load install.
- At regular intervals on longer journeys.
- Every two hours on bad terrain.
- After interruption of a journey during which the vehicle was left unsupervised. (check for damage due to outside intervention)

Rack Loading

Do not exceed the maximum load specified for the roof rack, accessory rack or the maximum load recommended by the vehicle manufacturer.

Max Roof Load = weight of roof rack + weight of accessory racks + weight of load.

The roof rack or accessory rack may not project over the gutter. For cars without gutters over the outer edge, refer to StVZO (or nation regulations).

Load shall be uniformly distributed with the lowest possible center of gravity.

Load should not substantially extend beyond the loading surface of the roof rack. refer to StVZO (or nation regulations).

Vehicle Driving and Regulations

The speed driven must be suited to the load transported and to official speed limits. In the absence of any speed limits, we recommend a maximum speed of 130 km/h.

When transporting any load, the speed of the vehicle must take into account all conditions such as the state of the road, the surface of the road, traffic conditions, wind, etc. Vehicle handling, cornering, braking and sensitivity to side winds will change with the addition of roof top loads.

Off-road driving is not recommended and could result in damage to your vehicle or your gear.

Maintenance

The accessory rack should be carefully cleaned and maintained, particularly during the winter months. Use only a solution of water and standard car wash liquid without any alcohol, bleach or ammonium additives.

For reasons of fuel economy and the safety of other road users, the accessory rack and roof rack should be removed when not in use.

Periodically inspect accessory rack for damage. Replace lost, damaged or worn parts. Use only original spare parts obtained from a stocking specialist, dealer or manufacturer.

Any changes made to the roof racks and accessory racks as well as the use of spare parts or accessories other than those supplied by the manufacturer will lead to the lapsing of the manufacturer's warranty and liability for any material damage or accidents. You should observe these instructions to the letter and only use the original parts supplied.