



Installation Instructions

817746

2016-22 CHEVROLET CAMARO SS, ZL1

6.2L ENGINE

This kit works on models with Factory NPP Exhaust option with Quad Tips.

OVERVIEW:

1. Take a moment to read and understand these instructions before installing your Flowmaster performance system.

NOTE: Please inventory all parts now before continuing and if necessary, report any missing items to our tech line. This will avoid potentially stranding your vehicle until any missing replacement parts arrive.

ITM #	PART #	DESCRIPTION	QTY.
1	8430441-433	Right Muffler Assembly	1
2	8430441-434	Left Muffler Assembly	1
N/A	PK821	Hardware Package includes:	1
3	MC234BS	2¾" Stainless Band Clamp	2
4	HW502	7/16" Hanger Keeper	2

PREPARE VEHICLE FOR KIT INSTALLATION:

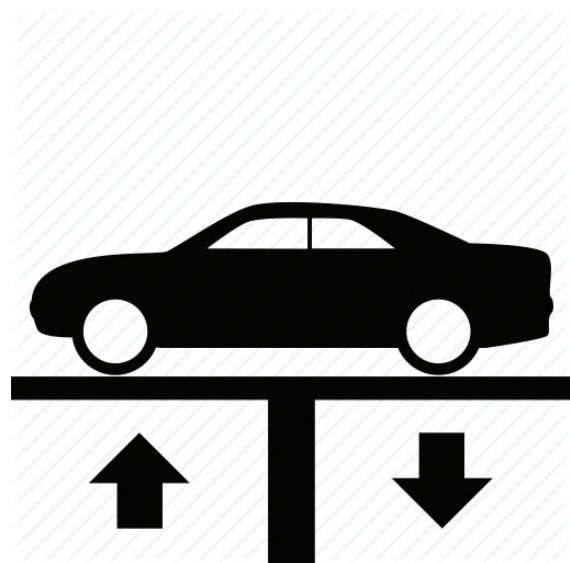
2. Raise vehicle up on a hoist or rack to working height. If you don't have access to a hoist or rack, support vehicle with jack stands.

WARNING:

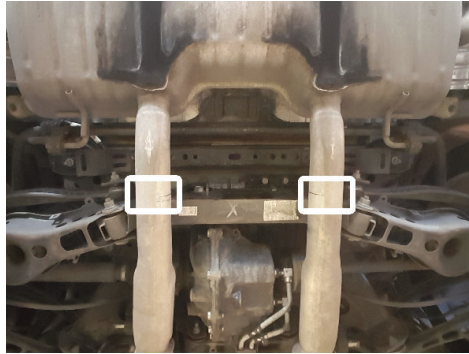
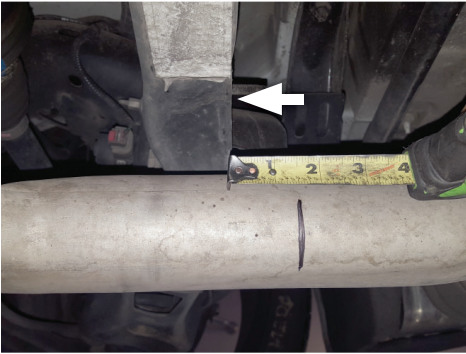
Avoid serious burns! Allow your vehicle time to cool completely before touching any factory engine components.

To ease preparation and installation of your new kit:

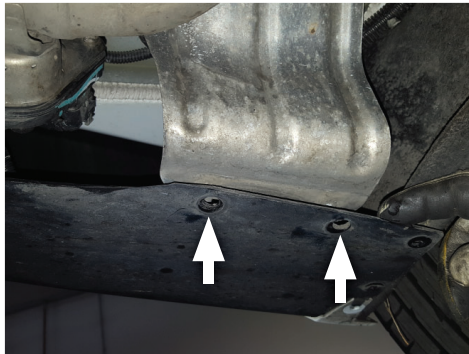
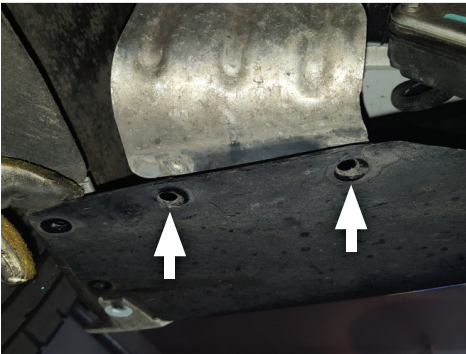
- Apply penetrating lubricant to mounts, bolts and clamps before you remove them.
- Use stands as necessary to support parts as you detach them from your vehicle and again as you install new parts.



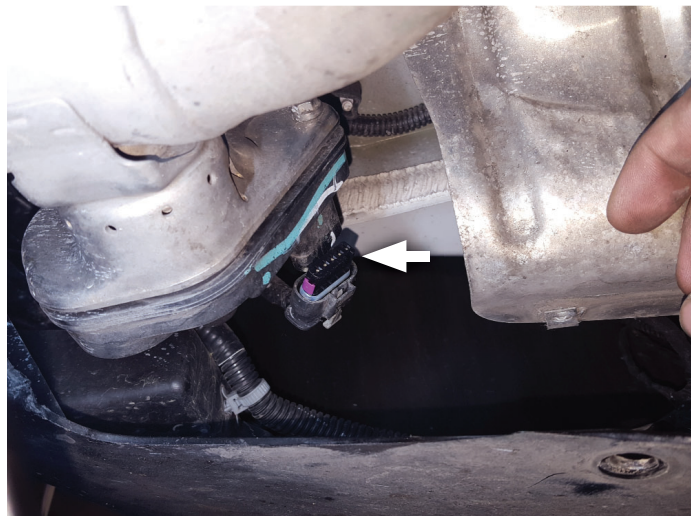
3. Mark tailpipes 1½" back from rear of suspension cross-member. Cut pipes where at each mark, then deburr cut pipe ends.



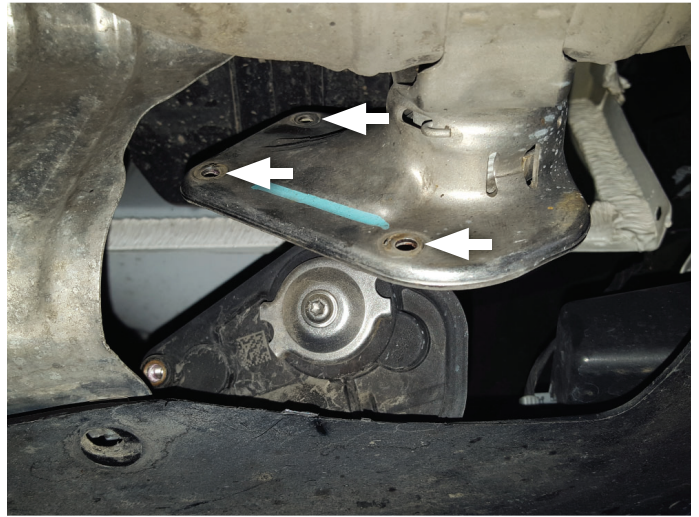
4. Remove screws (x4) attaching lower cover to frame to Mark factory driver and passenger tailpipes, 1" in front of bend as indicated.



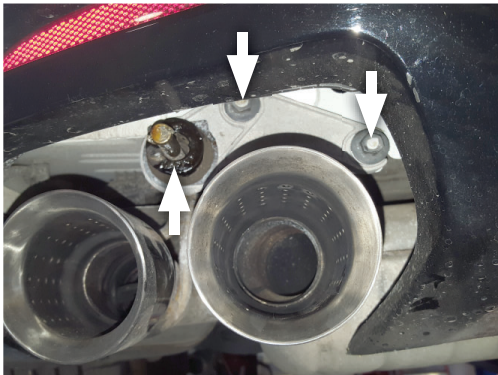
5. Unplug driver side actuator near outlet.



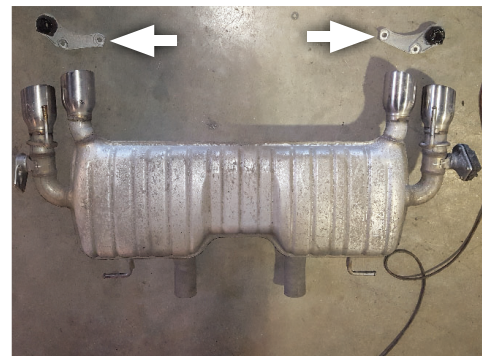
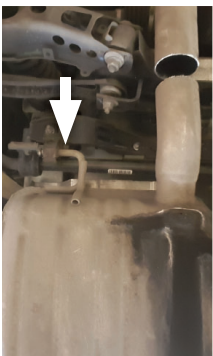
6. Remove bolts (x3) and detach actuator from mount. Retain bolts for later use.



7. Remove screws (x2 ea.) from muffler/pipe hangers then dismount muffler wire hangers from their mounts in front of driver and passenger side muffler outlets.



8. Dismount remaining wire hangers (x2) from isolators to remove factory muffler entirely from vehicle. Then remove muffler/pipe hangers from muffler and index them to their respective sides.



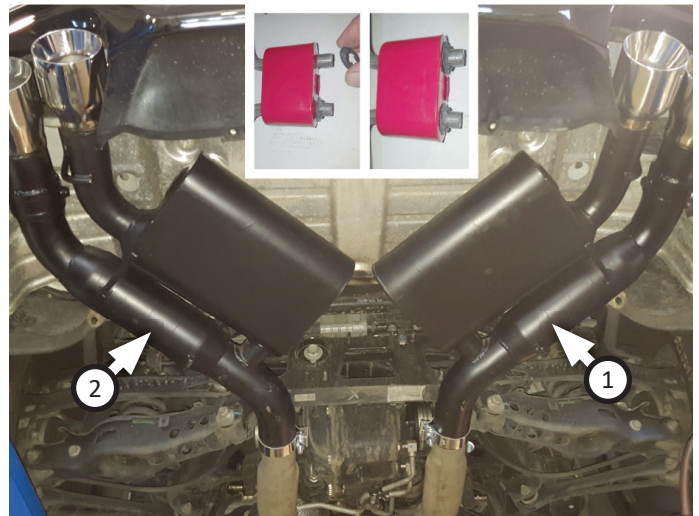
INSTALL FLOWMASTER EXHAUST SYSTEM

9. Remove nuts from stock and Flowmaster clamps, apply anti-seize compound to bolts and re-install nuts.

NOTE: The image in this step is intended for illustrative purposes only and may or may not accurately reflect components included in your kit.



10. Place (x1 ea.) **clamp (3)** onto **left (2)** and **right (1)** muffler then connect them to factory pipes, seated 2½"-3" deep. Remount muffler hangers (removed step 8) back onto vehicle to secure mufflers.
11. Adjust exhaust components for fit; maintaining ½" clearance and compensating for suspension, travel and vibration then tighten all clamps.
12. Secure exhaust system by fitting (x2) **hanger keepers (4)** onto each wire hanger.
13. Recommended: Secure slip-fit connections with a 1-inch tack weld then spray high-temp paint over each weld to prevent rust and premature corrosion.



Congratulations, the installation of your FLOWMASTER performance exhaust system is now complete!





Installation Diagram

817746

2016-22 CHEVROLET CAMARO SS, ZL1

6.2L ENGINE

This kit works on models with Factory NPP Exhaust option with Quad Tips.

